

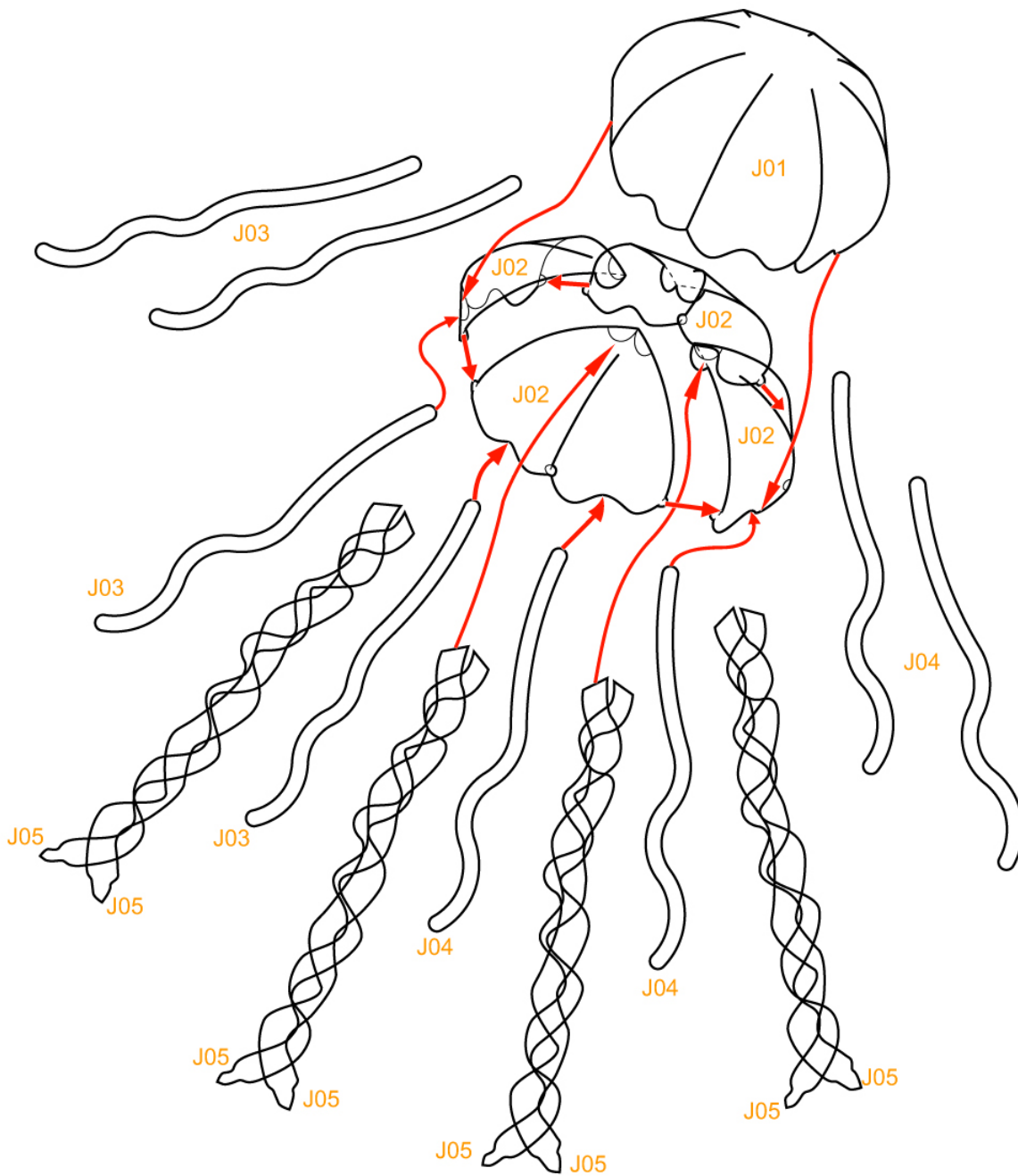

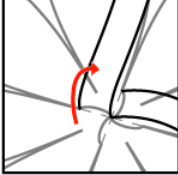
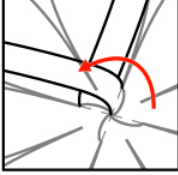
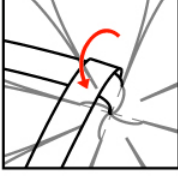

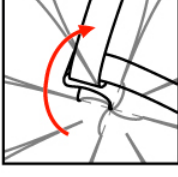



J05

組合說明

- - - 山折線 
 - - - 谷折線 
 ✕ 切除部分



- 5
- 1 
 - 2 
 - 3 
 - 4 
 - 5 
 - 6 
- ...
- ★ 

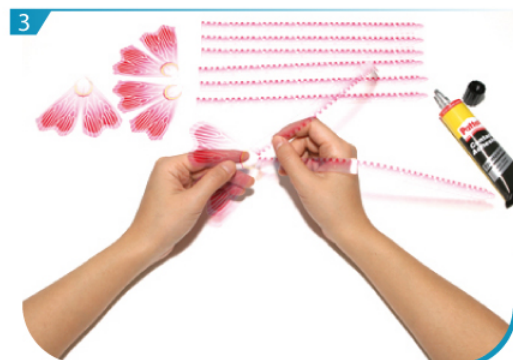
製作步驟



1 請用透明膠片打印出第一頁、第二頁及第三頁，並用剃刀於膠片上劃一下摺線。



2 沿線剪出所有組件。



3 按組合說明，把J02及J05黏合。



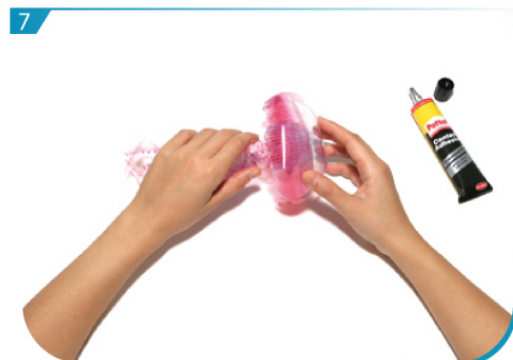
4 按組合說明，把J02黏合。



5 按組合說明，把J05左右交叉對疊，然後把底部黏合。



6 按組合說明，把J02的外圈摺疊貼合成身體。



7 再把J01及J02黏合。



8 最後把J02、J03及J04黏合。



9



美麗的水母即時顯現眼前。

